

SB Brace Frame Wall Formwork

Reliable concreting of single-sided walls

Compatible

Can be combined with MAXIMO, VARIO, TRIO, DOMINO, RUNDFLEX and RUNDFLEX Plus

Fast

All required connection parts are already mounted on the brace frame

Mobile

All individual components have been designed for ideal truck and container loading

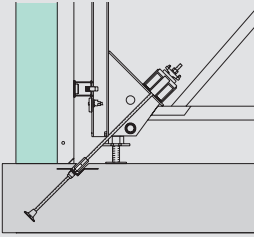


**Formwork
Scaffolding
Engineering**

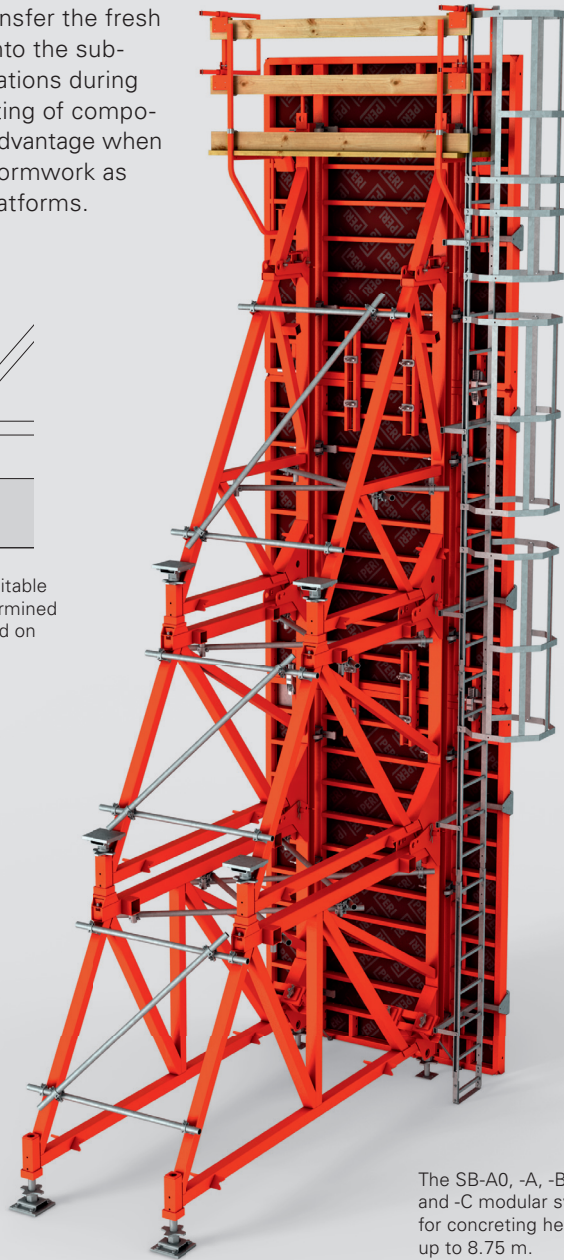
www.periqatar.com

SB Brace Frame Wall Formwork – Reliable concreting of single-sided walls up to 8.75 m high

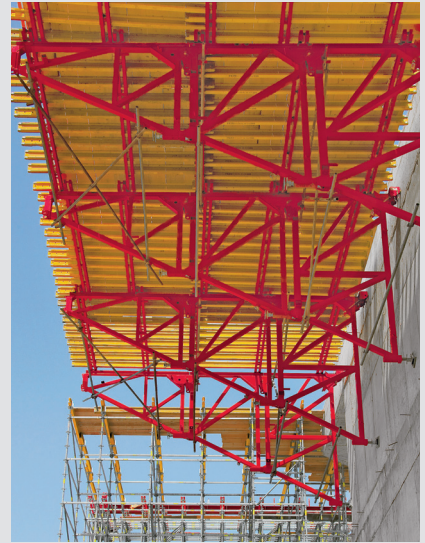
SB brace frames transfer the fresh concrete pressure into the sub-structure and foundations during single-sided concreting of components. This is a big advantage when using both vertical formwork as well as horizontal platforms.



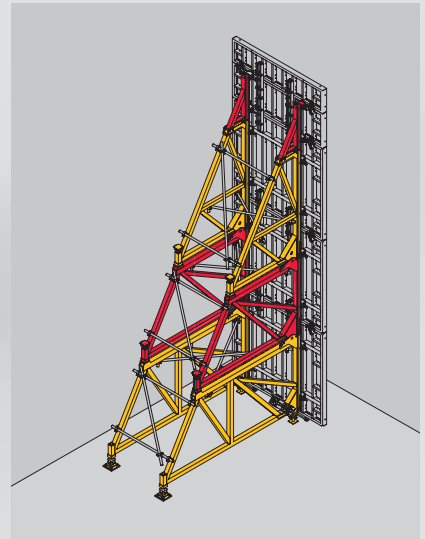
The choice of the most suitable anchoring system, is determined by the tensile force applied on the brace frame.



The SB-A0, -A, -B and -C modular system for concreting heights up to 8.75 m.



The PERI SB brace frame is used with high vertical loads or large geometrical dimensions. The modular structure is a big advantage both with vertical formwork as well as when using horizontal platforms.



PERI Qatar LLC
Formwork Scaffolding Engineering
New Industrial Area
Zone 81, St. 9, Bldg. 51
P.O.Box: 31295
Doha – Qatar
Tel. +974 4411.4816/7
Fax +974 4411.4348
info@periqatar.com
www.periqatar.com